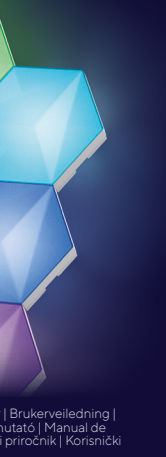
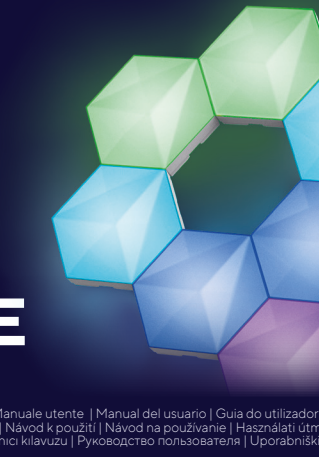
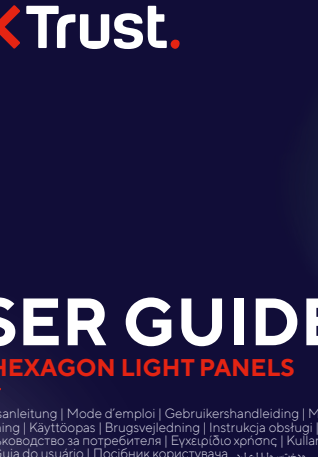
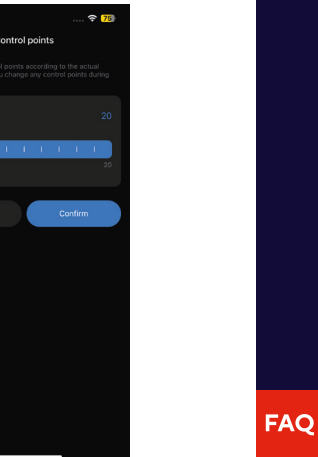
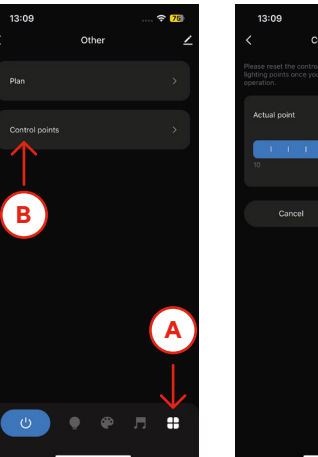
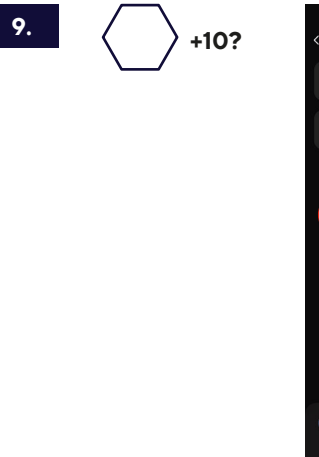
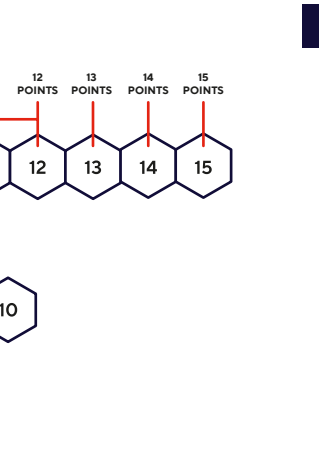
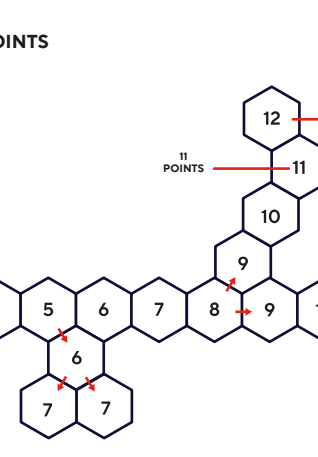
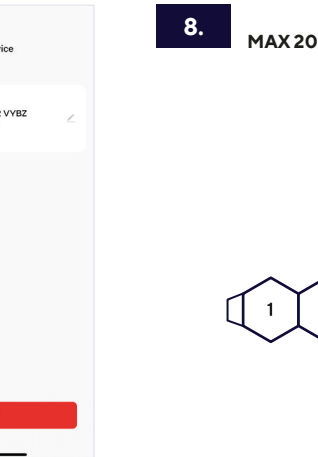
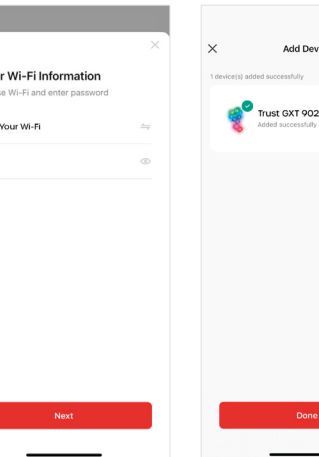
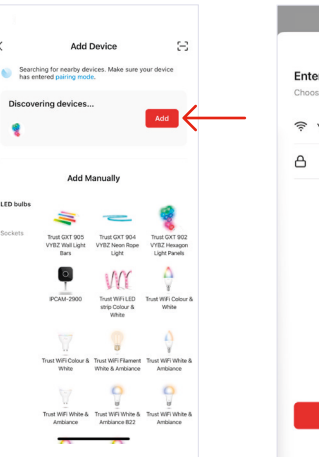
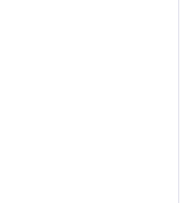
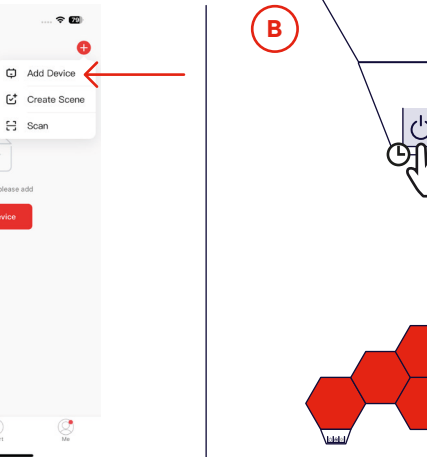
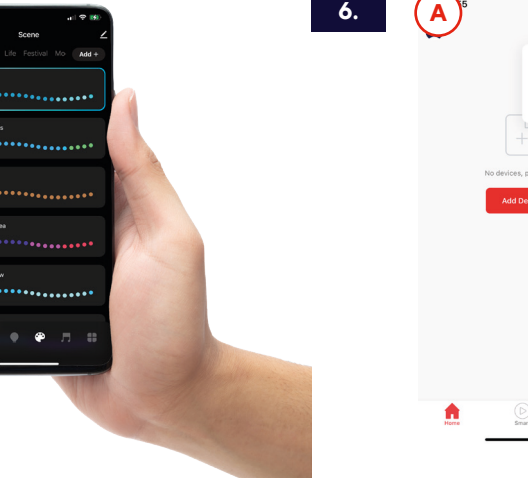
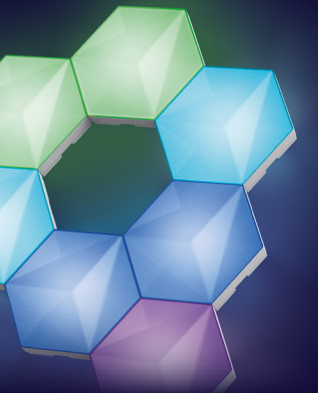




**DOWNLOAD THE TRUST WIFI APP FROM  
THE GOOGLE PLAY OR APPLE STORE**  
Alexa and Google Assistant voice compatibility  
allows you to control the panels from a far



# VYBZ USER GUIDE RGB HEXAGON LIGHT PANELS



FAQ

**WWW.TRUST.COM/25421/FAQ**  
Trust International BV - Laan van Barcelona 600 - 3317DD, Dordrecht, The Netherlands  
©2024 Trust All rights reserved.

Bedienungsanleitung | Mode d'emploi | Gebruikershandleiding | Manuale utente | Manual del usuario | Guia do utilizador | Brukerveiledning |  
Bruksanvisning | Käyttöopas | Brugsvejledning | Instrukcja obsługi | Návod k použití | Návod na používanie | Használati útmutató | Manual de  
utilizare | Ръководство за потребителя | Ευχαρίδιο χρήσης | Kullānāri kilavuzu | Руководство пользователя | Uporabniški priročnik | Korisnički  
priručnik | Guia do usuário | Посібник користувача | مددگاہتہدہ

