

# YOGA Slim 6i (14", 8)

## Make Your Move.

Smart mobility, empowered. The Yoga Slim 6i, designed with Intel® Evo™ as a no-compromise, premium mobile experience, fulfills the promise of portable smart performance matched with phenomenal lightness and military-grade toughness. Stay light on your feet and deep in the pocket with 13<sup>th</sup> Gen Intel® Core™ processors and an up to 14" OLED 16:10 display to immerse yourself deep in the story and creative process. That's a laptop that evolved.

### Why you should buy the Lenovo Yoga Slim 6i (14", 8)



#### Stay in the pocket

Stay in the pocket even as your hybrid lifestyle demands high mileage with a device that packs a punch while keeping you light on your feet with the Intel® Evo™ standard to deliver a no-compromise, premium mobile experience that strikes the ideal balance of performance and mobility. Be creative with up to 13<sup>th</sup> Gen Intel® Core™ processors, up to 16 GB LPDDR5 RAM, and up to 1 TB PCIe SSD.



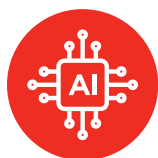
#### Thin, light, durable

Answer your calling as an inspiration seeker and on-the-go digital creator with the lightweight Yoga Slim 6i, cast with MIL-STD 810H military-grade rugged durability and built for endless wandering – or just staying home – with solid all-metal aluminum materials for a thin yet durable chassis and a raised camera notch for ease of pening.



#### Picture perfect

See, feel, and create more wherever you find yourself, with an up to 14" OLED display enhanced by Dolby Vision®, powering your creation and immersing you deeper into the story. With a taller 16:10 aspect ratio and an optional touch support, your creative work has never felt so intuitive. Stay immersed without straining your eyes with TÜV Hardware Low Blue Light certification.



#### Engineered for smarter experiences

Realize your full mobile potential with the Lenovo AI Engine+ which intuitively understands your needs as you move through different scenarios while increasing your power, display, voice, security, and connectivity. Squeeze out more performance and wireless connectivity while safeguarding your data and system with integrated security. Improve video conferencing with noise cancelling and background blur, while Flip-to-Start lets you start your day faster.



# YOGA Slim 6i (14", 8)

## SPECIFICATIONS

Yoga Slim 6 14IRP8 | Yoga Slim 6 14IAP8\*

### PERFORMANCE

#### Processor

Intel® Core™ i7-1360P  
Intel® Core™ i5-1340P  
Intel® Core™ i7-1260P  
Intel® Core™ i5-1240P

#### Operating System

Windows 11

#### Graphics

UMA : Intel® Iris® X\*

#### Memory

LPDDR5 : 8 GB / 16 GB

#### Storage

PCIe M.2: 512 GB / 1 TB

#### Camera & Microphone

FHD Webcam  
IR Camera  
Camera Shutter  
Dual Microphones

#### Audio

2 x 2W Speakers; Dolby Atmos® Audio

#### Battery<sup>1</sup>

LCD (65Whr)

MobileMark® 2018 : Up to 11 Hours

Local Video Playback : Up to 17 Hours<sup>2</sup>

Rapid Charge Express : 15 min. / 3 Hours Usage

LCD (60Whr)

MobileMark® 2018 : Up to 10 Hours

Local Video Playback : Up to 16 Hours<sup>2</sup>

Rapid Charge Express : 15 min. / 3 Hours Usage

### DESIGN

#### Display

14" 2.8K (2880 x 1880) IPS, 120 Hz, 16:10, 400 nits, 100% sRGB, Dolby Vision®, TÜV Low Blue Light Certification, Matte (Optional Glass Touch)

14" 2.2K (2240 x 1400) IPS, 60 Hz, 16:10, 300 nits, 100% sRGB, Dolby Vision®, TÜV Low Blue Light Certification, Matte

14" FHD+ (1920 x 1200) OLED, 60 Hz, 16:10, 400 nits, 100% DCI-P3, Dolby Vision®, TÜV Low Blue Light Certification, Matte

#### Dimensions (W x D x H)

(mm) : 312 x 221 x as thin as 14.9

(inches) : 12.28" x 8.7" x as thin as 0.59"

#### Weight

Starting at 1.31 kg (2.89 lbs)

#### Hinge

180°

#### Colors

Storm Grey  
Misty Grey



### CONNECTIVITY

#### WLAN

WiFi 6  
WiFi 6E (Evo™)

#### Bluetooth®

Bluetooth® 5.1<sup>3</sup>

#### Input/Output (I/O) Ports

##### Left

2 x Thunderbolt™ 4.0 (PD 3.0/DP 1.4)  
1 x HDMI 2.0

##### Right

1 x USB-A 3.2 Gen 1<sup>4</sup>  
1 x Audio Combo Jack

### PRELOADED SOFTWARE

- Windows 11 Home/Pro
- Lenovo Vantage
- Microsoft 365 Trial
- McAfee® LiveSafe™
- Amazon Alexa
- Dolby® Access (Dolby Vision® and Atmos®)

### NOTABLE MENTIONS

- ENERGY STAR®
- EPEAT™ Gold
- MIL-STD 810H Certified

<sup>1</sup> All battery life claims are approximate and based on two methods of testing: MobileMark® 2018 battery life benchmark and continuous 1080p video playback on the latest update of Windows 10 (with 150 nits brightness and default volume level). Actual battery life will vary and depends on many factors such as product configuration and usage, software use, wireless functionality, power management settings, and screen brightness. The maximum capacity of the battery will decrease with time and use.

<sup>2</sup> Local video playback @ FHD 150 nits.

<sup>3</sup> Bluetooth® version depends on OS.

<sup>4</sup> The actual transfer speed of the USB 3.2 will vary and, depending on many factors, such as the processing capability of host and peripheral devices, file attributes and other factors related to system configuration and your operating environments, will be slower than a speed of 20 Gbit/s.

With Lenovo  
**AI Engine+**

## LENOVO SERVICES

#### Lenovo Premium Care Plus

Lenovo Premium Care Plus is the ultimate PC support experience with you as our priority 24/7. Enjoy personalized hardware and software support from a global network of elite technicians, along with accidental damage protection, fast repairs with onsite support, extended battery warranty, data migration assistance, and smart performance solutions that optimize PC performance and security.

#### Lenovo Smart Performance

Smart Performance Services within Lenovo Vantage will keep your system running at optimum performance and proactively fix issues that affect PC performance, internet performance, remove malware, and improve device security.

#### Lenovo Accidental Damage Protection

Avoid the hassles of unexpected damage & repair costs. With coverage for drops, spills, electric surges, and broken LCD screens, accidental damage protection makes it easy to repair to your PCs and ensures your device is up and running fast.

#### Lenovo CO<sub>2</sub> Offset Services

Offset the carbon emissions of your PC with Lenovo CO<sub>2</sub> Offset Services – an easy and transparent solution to offset emissions across the average lifecycle of your device. These offsets are invested in UN-approved initiatives like renewable energy or ecological projects, thus contributing towards a more sustainable future.

#### Lenovo Sealed Battery Warranty

Long-lasting battery life is not just a feature but a necessity to help you stay productive and connected all day long. Protect your PC's sealed battery from degradation, enjoy hassle-free battery replacement service, and safeguard your PC from future battery failure with our Sealed Battery Warranty Service.

#### Lenovo Warranty Extensions (Up to 3 Years Duration)

Gain complete peace of mind by extending your base warranty to up to 3 years and minimize unexpected repair costs.

## OPTIONS & ACCESSORIES



Lenovo Yoga  
Mouse with Laser  
Presenter



Lenovo Yoga Active  
Noise Cancellation  
Headphones



Lenovo  
Yoga Sleeve

### McAfee® LiveSafe™

Register McAfee® to enjoy these benefits in your FREE 30-day trial.

- Award-winning Antivirus
- Password Manager
- Safe Web Browsing
- Multi-device Compatibility
- Identity Theft Protection
- Free Customer Support

\* Example of Lenovo catalogue naming convention

Yoga	Slim	6	1	4	I	R	P	8
Sub-brand	Form Factor	Positioning	Screen Size	Platform Code	Generation			

#### Intel® platform codes

Gemini Lake: IGM, Whiskey Lake: IWL, Icelake: IIL, Gemini Lake: IGL, Comet Lake: IML, Tiger Lake: ITL, Alder Lake: IAP, Alder Lake: IAH, Alder Lake: IAL, Raptor Lake: IRP, Raptor Lake: IRL.

## WWW.LENOVO.COM

Lenovo reserves the right to alter product offerings and specifications at any time, without notice. Lenovo makes every effort to ensure accuracy of all information but is not liable or responsible for any editorial, photographic or typographic errors. All images are for illustration purposes only. For full Lenovo product, service and warranty specifications visit [www.lenovo.com](http://www.lenovo.com). Lenovo makes no representations or warranties regarding third party products or services. **Trademarks:** The following are trademarks or registered trademarks of Lenovo: Lenovo, the Lenovo logo, IdeaPad, IdeaCentre, yoga and yoga home. Microsoft, Windows and Vista are registered trademarks of Microsoft Corporation. Qualcomm Snapdragon is a product of Qualcomm Technologies, Inc. and/or its subsidiaries. Qualcomm and Snapdragon are trademarks of Qualcomm Incorporated, registered in the United States and other countries. Google, Chrome, and Chromebook are trademarks of Google LLC. Netflix is a registered trademark of Netflix, Inc. Other company, product and service names may be trademarks or service marks of others. Visit [www.lenovo.com/lenovo/us/en/safecomp/](http://www.lenovo.com/lenovo/us/en/safecomp/) periodically for the latest information on safe and effective computing. ©2022 Lenovo. All rights reserved.



Lenovo