

YOGA Slim 7i Pro (16", 7)

Powerful. Uncompromising.

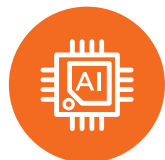
Unlock pure, unstoppable power with the Lenovo Yoga Slim 7i Pro designed on Intel® Evo™. This incredibly compact, ultra-thin laptop packs a 120Hz touchscreen, offers the best overall mobile performance with Intel® Evo™*, now featuring 12th Generation Intel® Core™ H Series processors and Intel® Arc™ dedicated graphics. The QHD 16:10 display features 100% sRGB color accuracy and ultra-thin bezels on a huge 16" screen, giving you some crucial added work space.

WHY YOU SHOULD BUY THE LENOVO YOGA SLIM 7i PRO (16", 7)



Ultimate performance. Uncompromised battery life.

You no longer need to compromise between power and mobility. Paired with amazing battery life, Intel® Evo™ now featuring the 12th Generation Intel® Core™ H Series processors distribute performance where you need it most – saving you time and increasing your ability to do the things you want. With a first-of-its-kind design, experience the power of a processor designed for real-world multitasking. Intel® Arc™ graphics allow you to crunch through everything from 8K video processing to AI-accelerated photo editing, while enjoying higher quality more realistic gaming.



Optimize your user experience with AI

Powered by our AI Engine+, your Yoga is now a much smarter PC: more secure, fluid and fast, and crucially, more intuitive – knowing what you need before you do and responding in real time. With Adaptive Performance, accelerate performance or enhance battery life and acoustics while keeping your connection stable. With Intelligent Sense, get immediate secure access, sharpen up your resolution and visuals, issue voice and gesture commands, minimize ambient noise, and more. And with Integrated Security, your device is more secure and protected than ever before.



Transport your visuals to a higher realm

Designed for extensive creative sessions, the pristine QHD IPS touchscreen display runs seamless visuals in smooth motion with a rapid 120Hz refresh rate. Enable massive productivity with the 16:10 increased usable screen size, and view it all with true-to-life 100% sRGB color accuracy. Work, game, and watch videos in any environment on the up-to-500-nits bright display.



Near-borderless display

Catch every sub-pixel of the Yoga Slim 7i Pro's stunning 16" 16:10 display. Framed by razor-thin borders and only 3.9 mm bezels at the top and sides of the display. Immerse yourself in a near-borderless experience.



* In thin & light Windows-based PCs. Intel's comprehensive laptop innovation program Project Athena ensures all designs with the Intel Evo brand have been tested, measured and verified against a premium specification and key experience indicators. Testing results as of August 2020, and do not guarantee individual laptop performance. See intel.com/Evo for details. Results may vary for advertised systems and power and performance vary by use, configuration and other factors.

[WWW.LENOVO.COM](https://www.lenovo.com)



Lenovo

YOGA Slim 7i Pro (16", 7)

SPECIFICATIONS

Yoga Slim 7 Pro 16IAH7*

PERFORMANCE

Processor

Intel® Core™ i7-12700H
Intel® Core™ i5-12500H (2nd wave)

Operating System

Windows 11

Graphics

Intel® Arc™ A370M

Memory

LPDDR5 : 16 / 32 GB; Dual Channel

Storage

SSD PCIe M.2 2242 / 2280 : 512 GB / 1 TB

Camera & Microphone

HD Webcam
IR Camera
Dual Microphones

Audio

2 x 2W Speakers
Dolby Atmos® Audio

Battery¹ (75WHr)

MobileMark® 2018 : 6.98 Hours

Local Video Playback : 12.83 Hours

Rapid Charge Express : 15 min. / 2 Hours Usage²

DESIGN

Display

16" 2.5K (2560 x 1600) Touch IPS, 500 nits,
100% sRGB, 120Hz, 16:10, Dolby Vision®,
TÜV Low Blue Light Certification

Dimensions (W x D x H)

(mm) : 356.81 x 247.42 x as thin as 17.4
(inches) : 14.05" x 9.74" x as thin as 0.69"

Weight

Starting at 2.08 kg (4.95 lbs)

Hinge

150°

Color

Storm Grey



CONNECTIVITY

WLAN

2x2 WiFi 802.11ax

Bluetooth®

Bluetooth® 5.1

Input/Output (I/O) Ports

2 x USB-A 3.2 Gen 1³ (One Always On)
1 x SD Card
1 x HDMI™ 2.0
1 x Thunderbolt™ 4 Type-C™
1 x Square DC-In
1 x Audio Jack

PRELOADED SOFTWARE

- Windows 11 Home/Pro
- Lenovo Vantage
- Microsoft Office 2021
- McAfee® LiveSafe™
- Amazon Alexa⁴
- Dolby® Access (Dolby Vision® and Atmos®)

¹ All battery life claims are approximate and based on two methods of testing: MobileMark® 2018 battery life benchmark and continuous 1080p video playback on the latest update of Windows 11 (with 150 nits brightness and default volume level). Actual battery life will vary and depends on many factors such as product configuration and usage, software use, wireless functionality, power management settings, and screen brightness. The maximum capacity of the battery will decrease with time and use.

² Local video playback @ FHD 150 nits.

³ The actual transfer speed of the USB 3.2 will vary and, depending on many factors, such as the processing capability of host and peripheral devices, file attributes and other factors related to system configuration and your operating environments, will be slower than a speed of 20 Gbit/s.

⁴ Available in select regions.

With Lenovo
AI Engine+

LENOVO SERVICES

Lenovo Premium Care Plus

The ultimate PC support experience, with you as our 24/7 priority. Enjoy personalized hardware and software support from a global network of elite technicians, along with extensive solutions that protect your PC from accidental damage, battery degradation, and ensures optimized PC performance and security.

Lenovo Smart Performance

Smart Performance Services within Lenovo Vantage will keep your system running at optimum performance and proactively fix issues that affect PC performance, internet performance, remove malware, and improve device security.

Lenovo Accidental Damage Protection

Avoid the hassles of unexpected damage & repair costs. With coverage for drops, spills, electric surges, and broken LCD screens, accidental damage protection makes it easy to repair to your PCs and ensures your device is up and running fast.

Lenovo Smart Privacy Services

Smart Privacy Services within Lenovo Vantage puts you in control of your privacy with an intelligent software that makes your browsing experience more private by blocking third-party web trackers, secures your online accounts, encrypts your WiFi connection, monitors your information for exposure in organizational data breaches, and removes your profiled data from select sites found on the internet.

Lenovo Sealed Battery Warranty

Long-lasting battery life is not just a feature but a necessity to help you stay productive and connected all day long. Protect your PC's sealed battery from degradation, enjoy hassle-free battery replacement service, and safeguard your PC from future battery failure with our Sealed Battery Warranty Service.

Lenovo Warranty Extensions (Up to 3 Years Duration)

Gain complete peace of mind by extending your base warranty to up to 3 years and minimize unexpected repair costs.

OPTIONS & ACCESSORIES



Lenovo Yoga Mouse with Laser Presenter



Lenovo 510 FHD Webcam



Lenovo Urban Sleeve Case

McAfee® LiveSafe™

Register McAfee® to enjoy these benefits in your FREE 30-day trial.

- Award-winning Antivirus
- Password Manager
- Safe Web Browsing
- Multi-device Compatibility
- Identity Theft Protection
- Free Customer Support

*Example of Lenovo marketing naming convention

Yoga	Slim	7	Pro	16	I	A	H	7
Sub-brand	Form Factor	Position		Screen size or volume (litre)	Platform			Generation

Intel® platform codes

Broadwell: IBD, Braswell: IBR, Broadwell: IBW, Baytrail: IBY, Cannonlake: ICN, Haswell: IHH, Kabylake: IKB, Skylake H: ISH, Skylake: ISK, Skylake Y: ISY, Skylake Z: ISZ, Gemini Lake: IGM, Whiskey Lake: IWL, Icelake: IIL, Gemini Lake: IGL, Comet Lake: IML, Tiger Lake: ITL, Alder Lake: IAP, Alder Lake: IAH, Alder Lake: IAL.

LENOVO CO₂ OFFSET SERVICES

Now give back to the environment in a tangible way! Lenovo CO₂ Offset Service gives you a simple and transparent way to offset carbon emissions and help the environment by supporting one of several United Nations Climate Action projects, including those that help to improve renewable energy, reduce air pollution, or enhance safe waste disposal, all of this at just the click of a button.

WWW.LENOVO.COM

Lenovo reserves the right to alter product offerings and specifications at any time, without notice. Lenovo makes every effort to ensure accuracy of all information but is not liable or responsible for any editorial, photographic or typographic errors. All images are for illustration purposes only. For full Lenovo product, service and warranty specifications visit www.lenovo.com. Lenovo makes no representations or warranties regarding third party products or services. **Trademarks:** The following are trademarks or registered trademarks of Lenovo: Lenovo, the Lenovo logo, ideapad, ideacentre, yoga and yoga home. Microsoft, Windows and Vista are registered trademarks of Microsoft Corporation. Ultrabook, Celeron, Celeron Inside, Core Inside, Intel, Intel Logo, Intel Atom, Intel Atom Inside, Intel Core, Intel Inside, Intel Inside Logo, Intel vPro, Itanium, Itanium Inside, Pentium, Pentium Inside, vPro Inside, Xeon, Xeon Phi and Xeon Inside are trademarks of Intel Corporation in the U.S. and/or other countries. Other company, product and service names may be trademarks or service marks of others. Battery life (and recharge time) will vary based on many factors including system settings and usage. Visit www.lenovo.com/lenovo/us/en/safecomp/ periodically for the latest information on safe and effective computing. ©2022 Lenovo. All rights reserved.



Lenovo